





Utilisation des ressources génétiques et principales activités des programmes d'amélioration de la lentille et du pois chiche type Kabuli à l'ICARDA

Amri M., Amri A., Hamwieh A., Niane A.A., Agrawal S.K.

 m.amri@cgiar.org
 [@amri_moez](https://twitter.com/amri_moez)



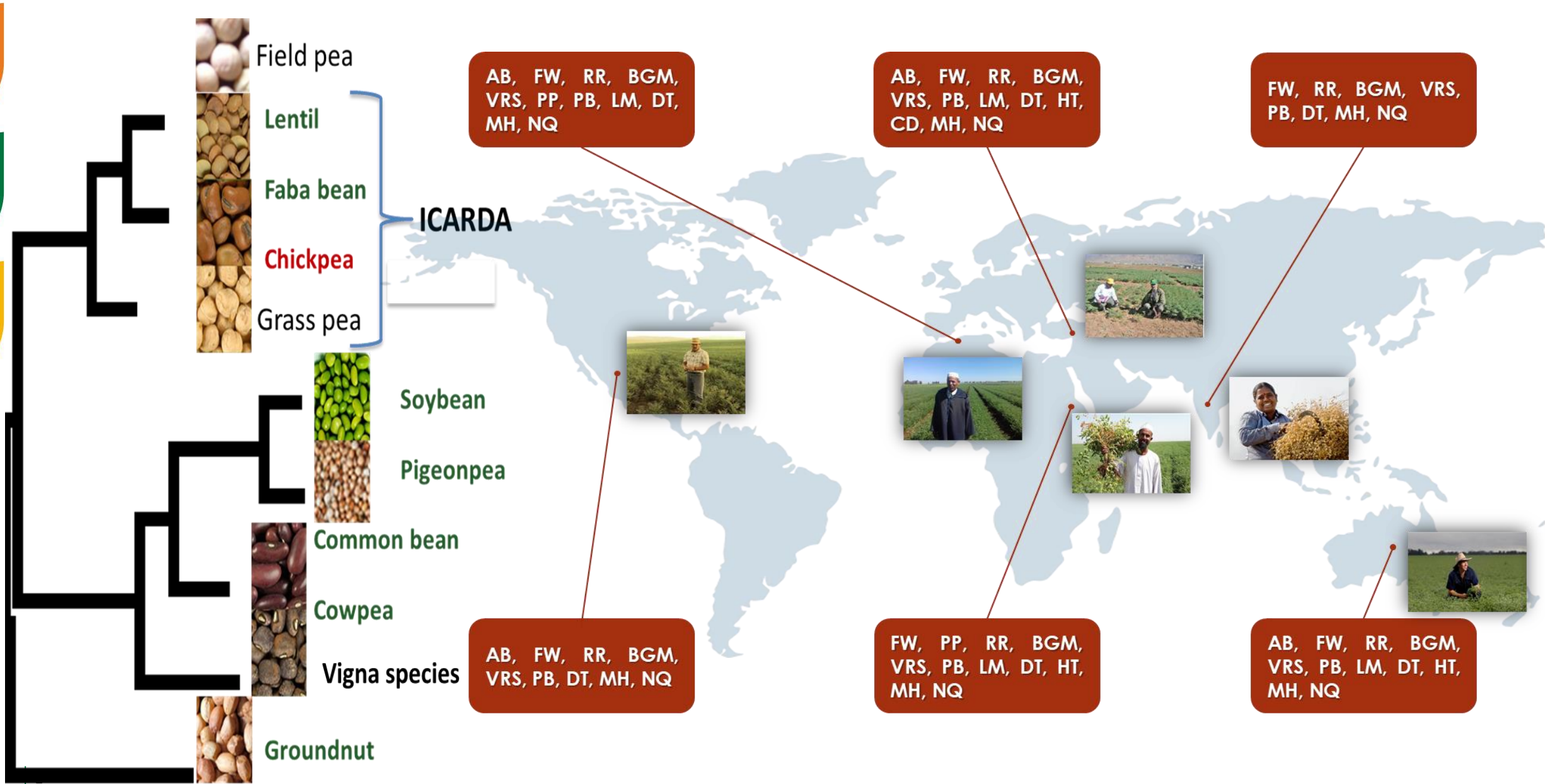
Toulouse, France
September 26-29th, 2018

icarda.org
International Center for Agricultural Research in the Dry Areas



cgiar.org
A CGIAR Research Center 

ICARDA, mandate crops

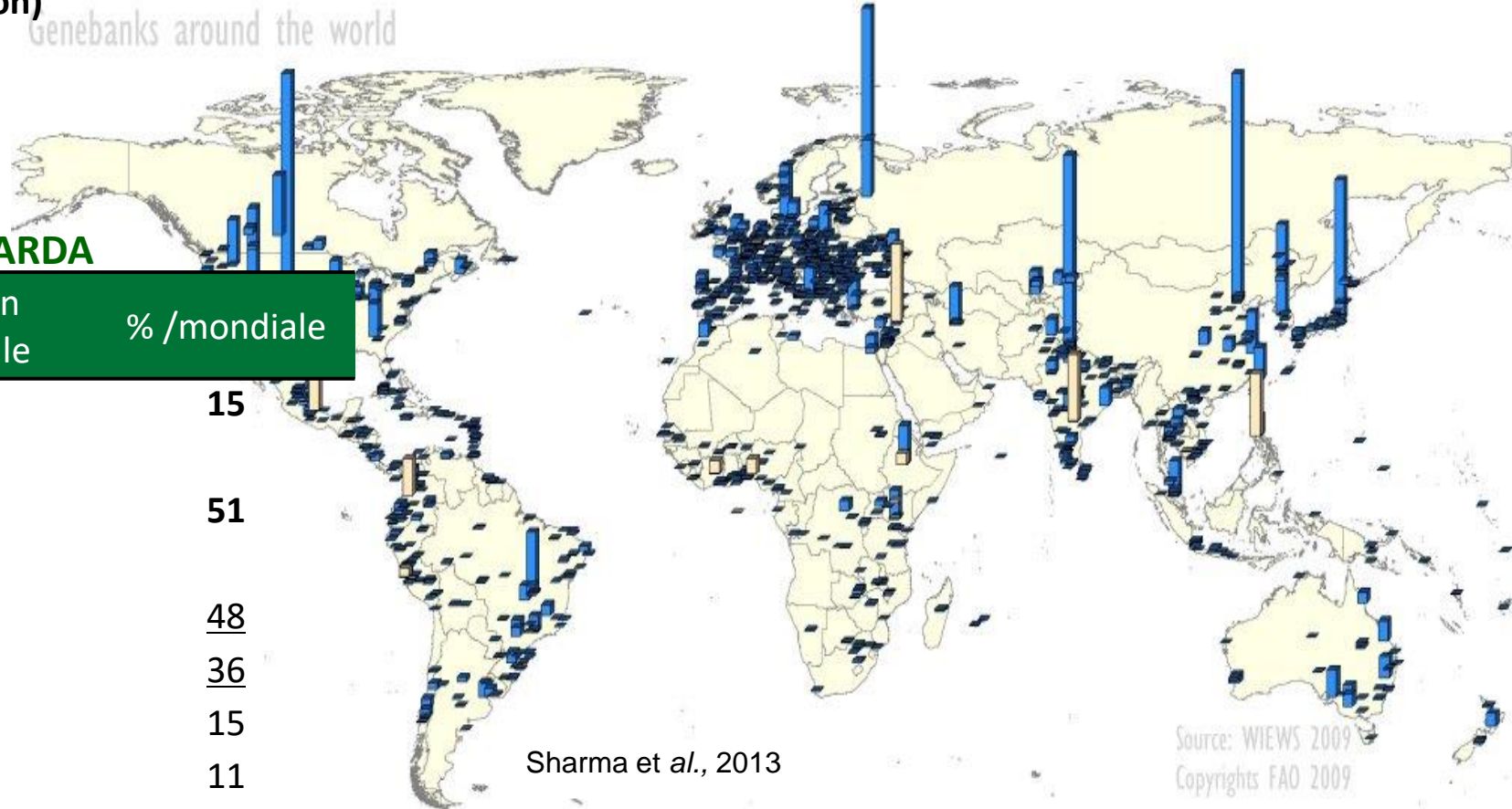


Ressources génétiques

Un total \approx 7.4 million accs. De différentes espèces (Conserved \approx 1750 GBs)
 \approx 15% leg. = 1.1 million accs.

- ICARDA (Syria, Morocco, Lebanon)
- ICRISAT, NBPGR and DGR (India)
- USDA (USA)

Genebanks around the world



Collection de la banque de gènes de l'ICARDA

Culture	Nombre d'accessions	Position mondiale	% /mondiale
Chickpea	15,195	2 nd	15
Wild Cicer	547		
Lentil	13,907	1 st	51
Wild Lens	605		
Faba bean	10,034	1 st	48
<i>Lathyrus spp.</i>	4,289	1 st	36
<i>Pisum spp.</i>	6,121	2 nd	15
<i>Trifolium spp.</i>	5,883	2 nd	11
<i>Vicia spp.</i>	6,388	1 st	13
Medicago annual	9,120	1 st	28

Sharma et al., 2013

Source: WIEWS 2009
 Copyrights FAO 2009



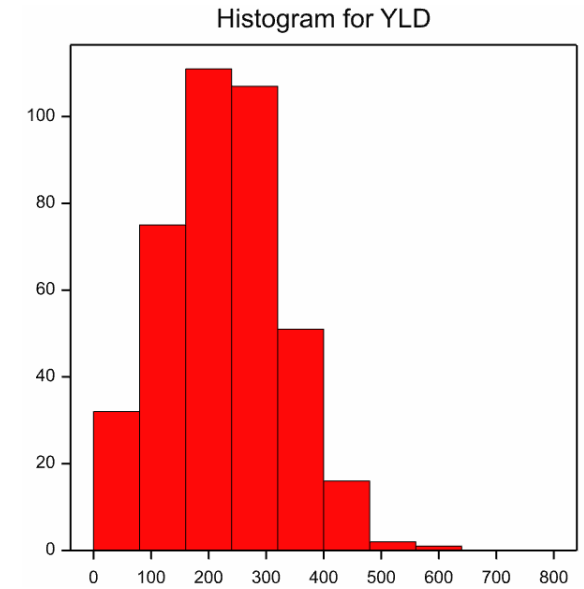
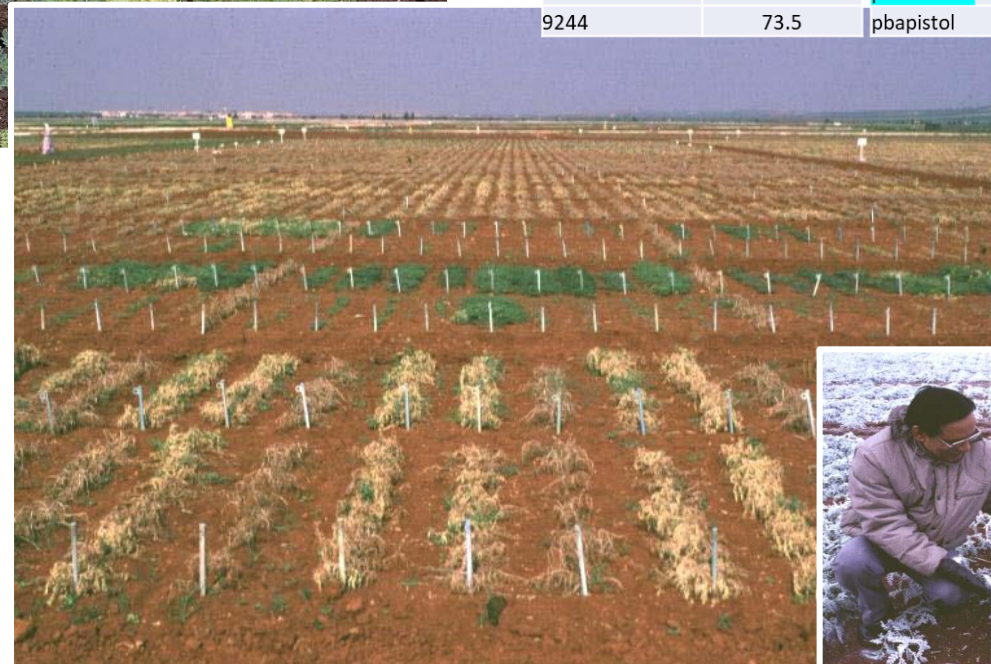
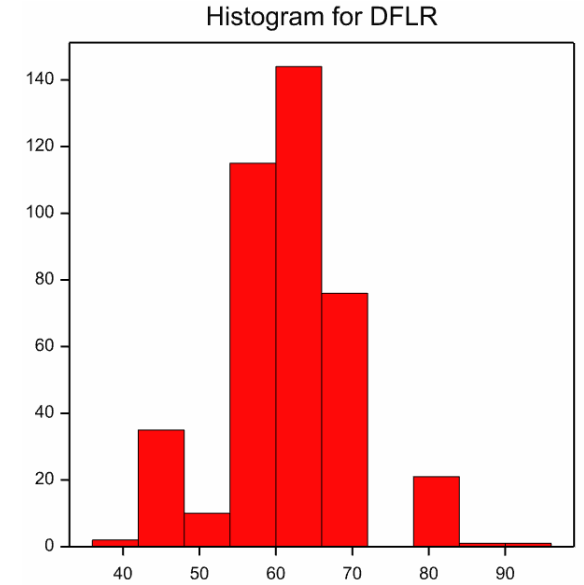
Contraintes majeurs



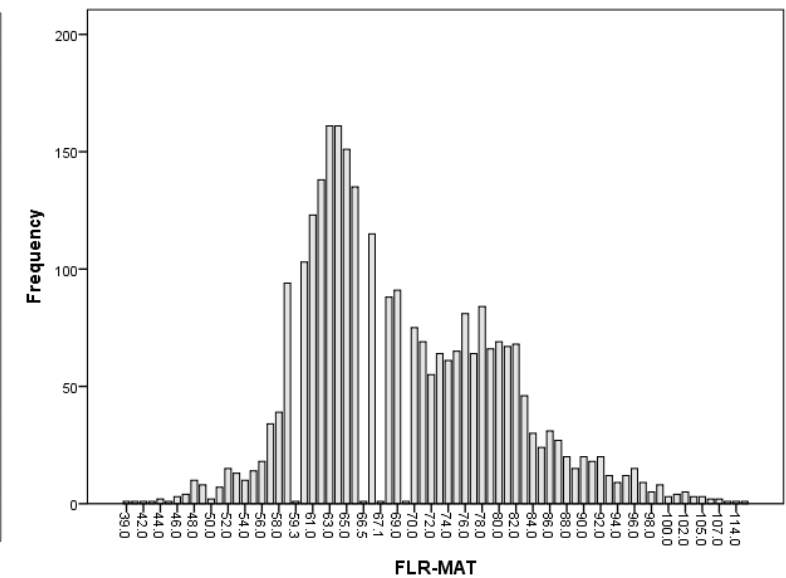
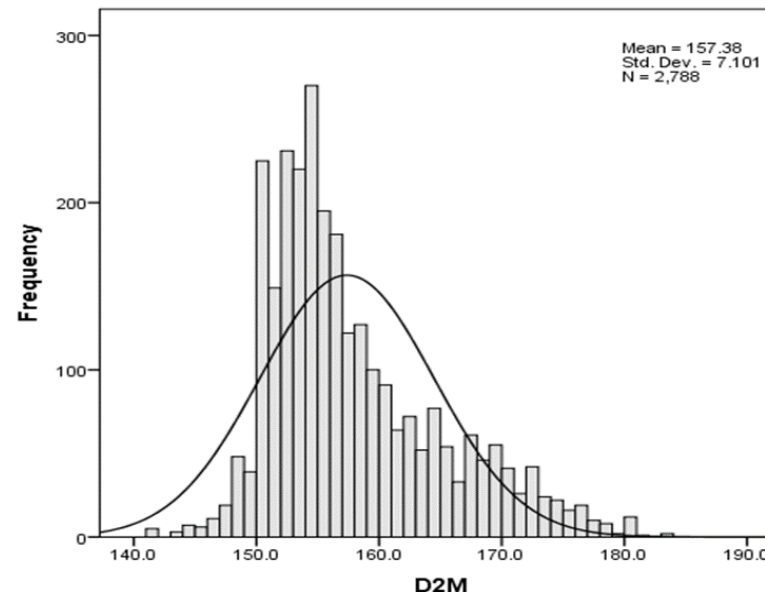
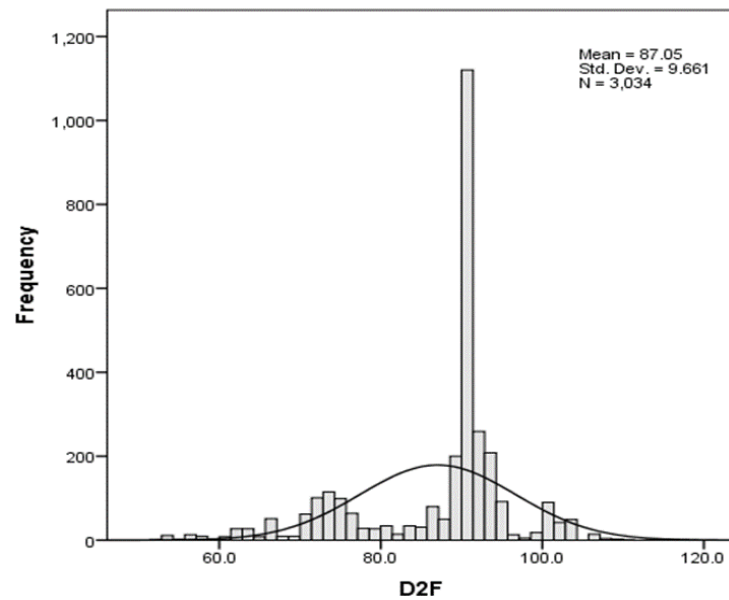
Contraintes majeurs



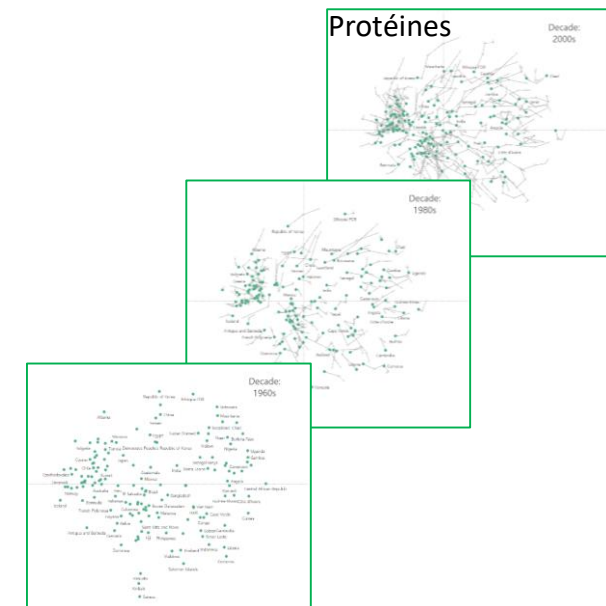
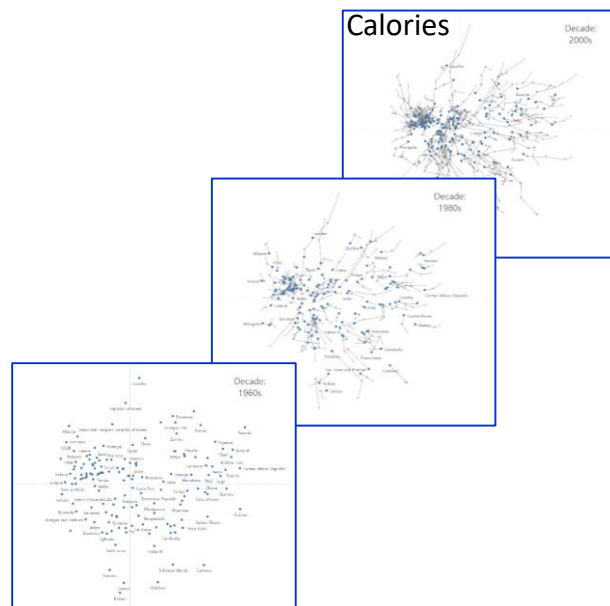
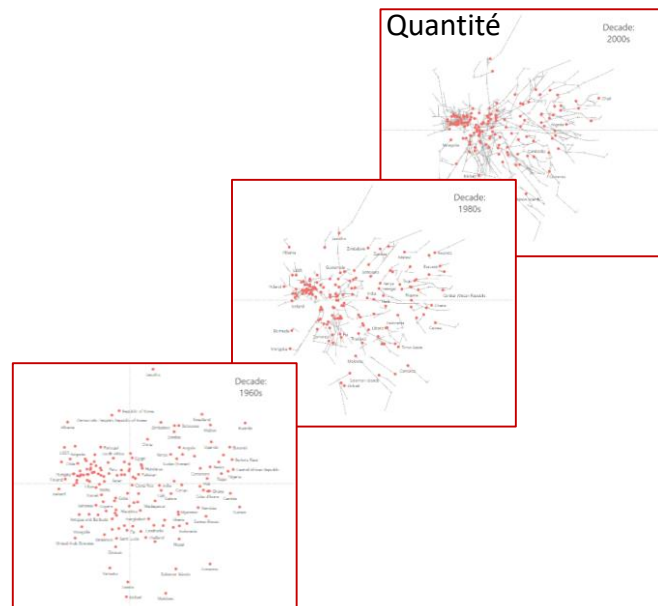
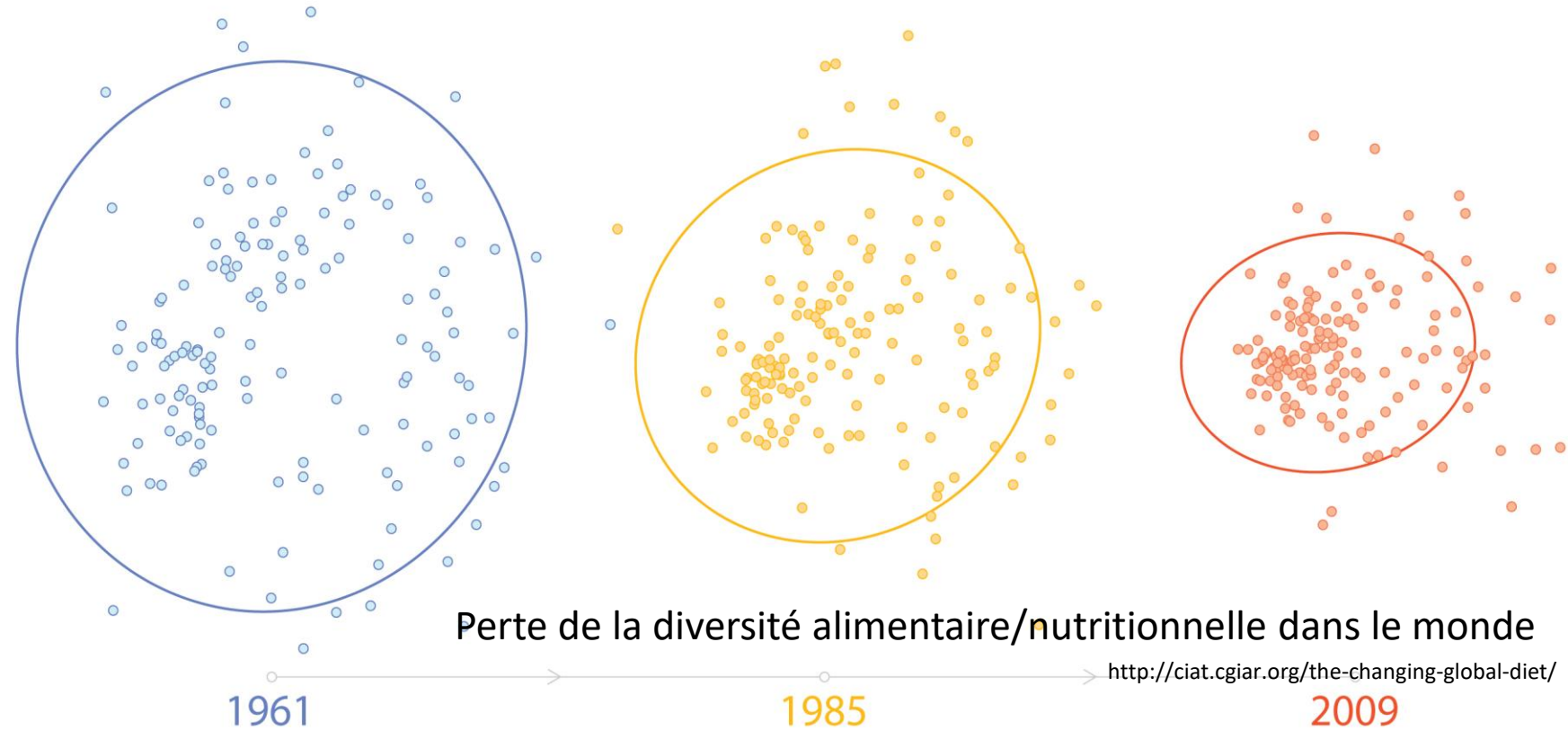
IG	100 SW means	IG	HTS means
70822	47.39	115390	2.5
70430	35.5	117697	2.5
70272	33.5	8985	2.5
IG	YLD means	IG	HTS means
117728	570	117696	3
73381	492.70	117703	3
75029	415	70772	3
70427	402.5	73382	3
IG	DMAT means	IG	HTS means
131983	88	117708	3.5
pbahattrick	88	117728	3.5
9434	88.5	70294	3.5
70421	89	70312	3.5
8447	89	70408	3.5
IG	PLHT means	IG	HTS means
74021	85.2	77	3.5
6035	80.7	8447	3.5
9244	73.5	pbahattrick	3.5
		pbapistol	3.5



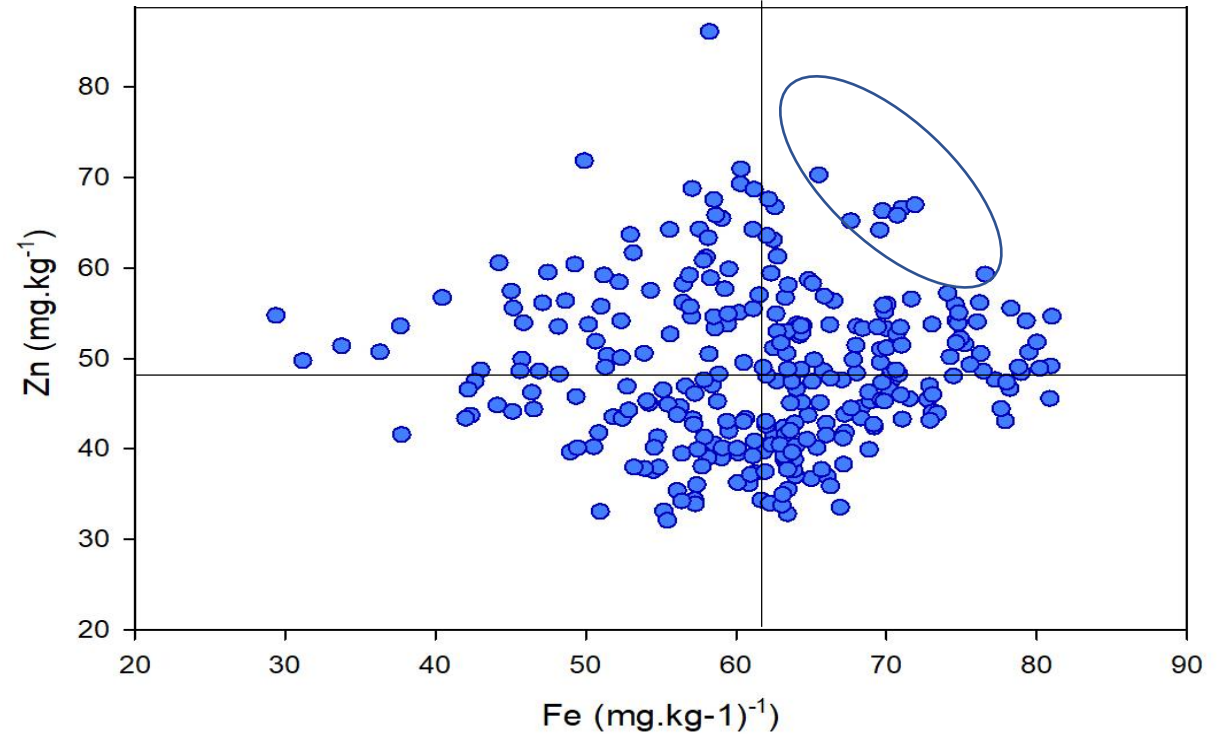
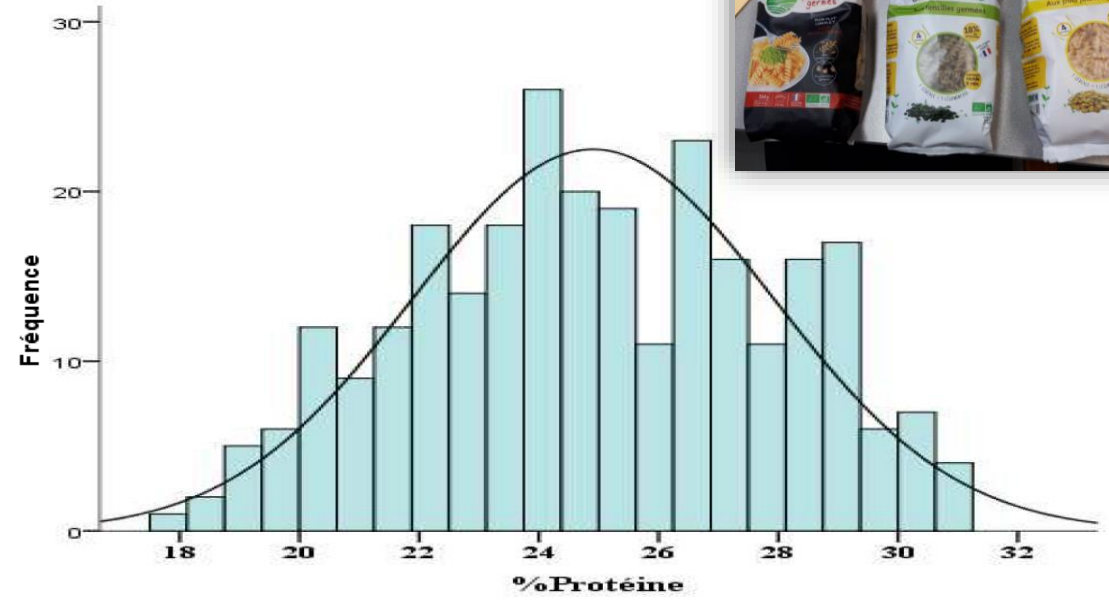
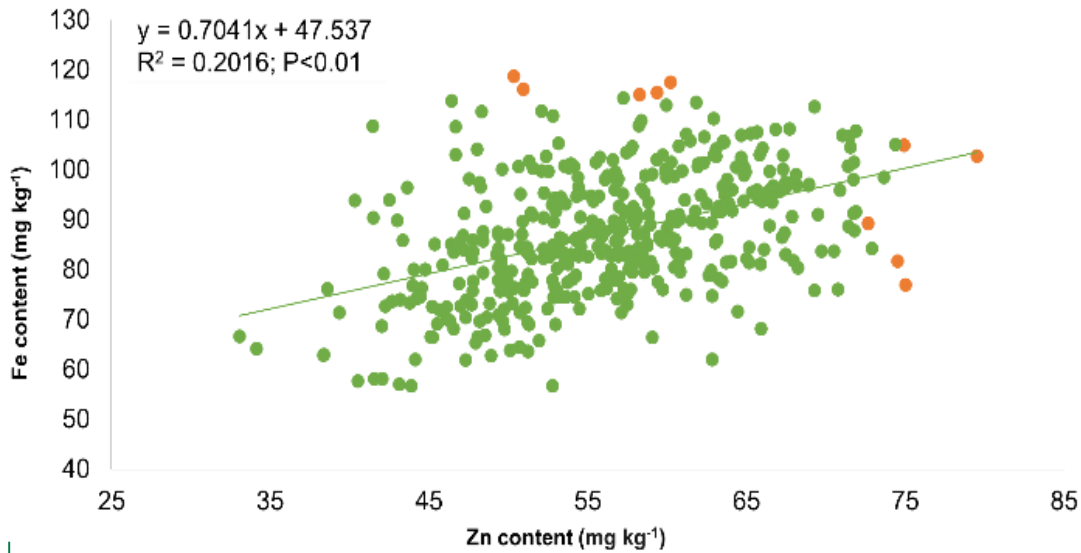
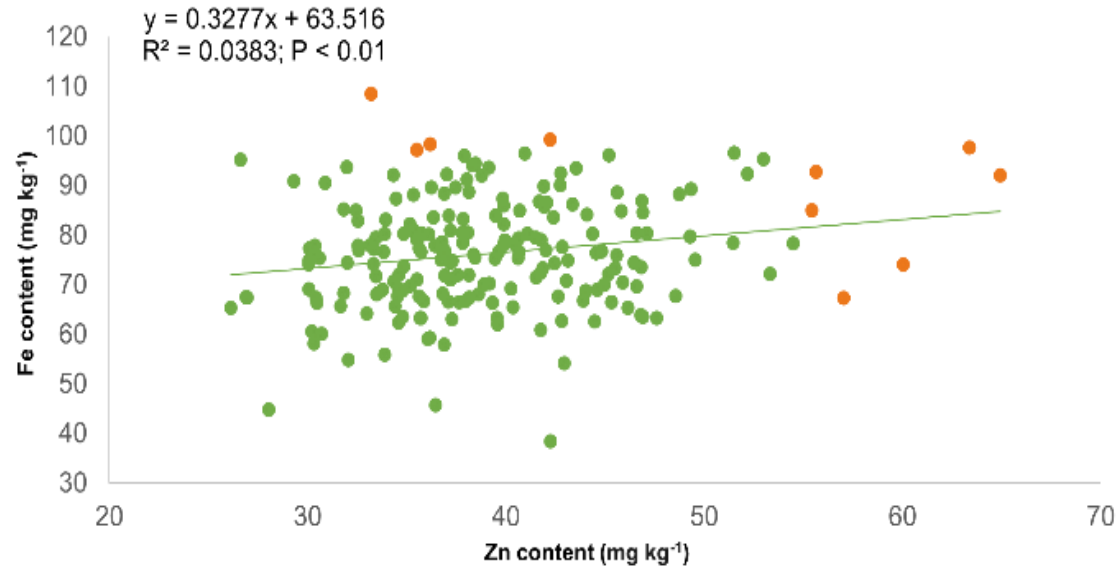
Développement de matériel génétique à cycle court



Amélioration pour la bonne qualité nutritionnelle



Amélioration pour la bonne qualité nutritionnelle; teneur en protéine, Fe, Zn



Pépinières Internationales

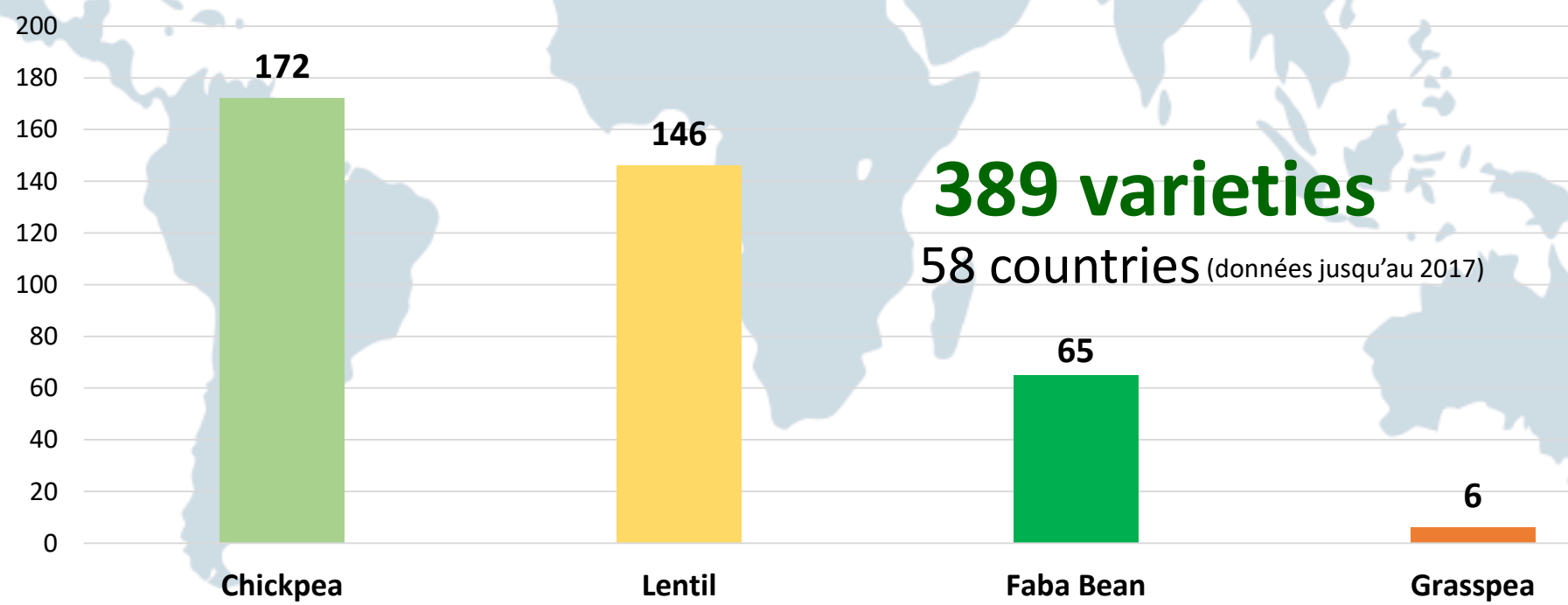
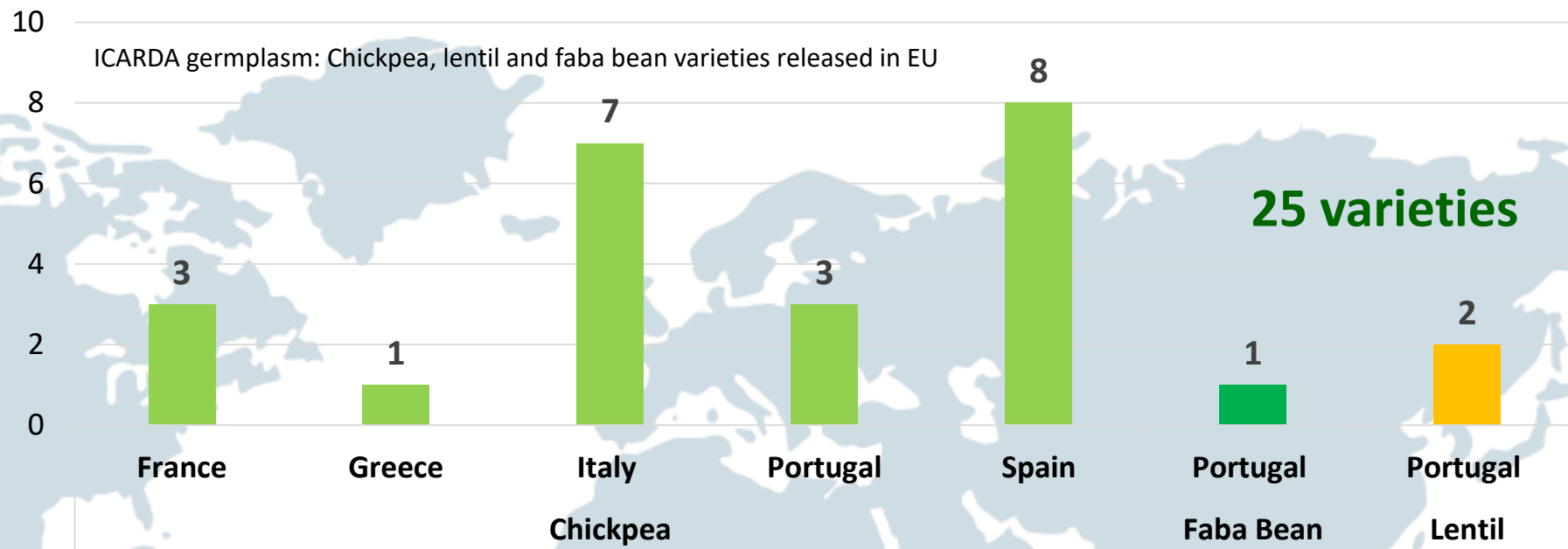
Nombre total et moyenne par année des pépinières et lignées partages avec les différents partenaires dans les différents pays au cours des six dernières années (2013-2018).

Row/Labels	Essais/pépinières		lignées/Populations		Pays	Partenaires
	total	moy.	total	moy.		
Pois chiche	2453	<u>350.4</u>	2842	<u>406.0</u>	28.9	52.1
Lentille	2467	<u>352.4</u>	2963	<u>423.3</u>	29.9	45.6
Total (Pois chiche, lentille, fèves, gesse)	6689	<u>238.9</u>	8049	<u>287.5</u>	24.7	37.4

Trial no.	Chickpea trial name	Trial no.	Lentil trial name
1	Elite Nursery Winter (CIEN-W)	1	Elite Nursery Mechanical harvestability (LIEN-MH)
2	Elite Nursery Spring (CIEN-S)	2	Elite Nursery Early (LIEN-E)
3	Elite Nursery Early (CIEN-E)	3	Elite Nursery, Extra-Early (LIEN-EE)
4	Elite Nursery extra Large Seeded (CIEN-LS)	4	Elite Nursery, Heat tolerance (LIEN-HT)
5	Adaptation Trial (CAT)	5	Elite Nursery, Drought tolerance (LIEN-DT)
6	Ascochyta Blight Nursery (CIABN)	6	Adaptation Trial (CAT)
7	Fusarium Wilt Nursery (CIFWN)	7	F ₄ Nursery, South Asia Region (CIF ₃ N-MR-)
8	Cold Tolerance Nursery (CICTN)	8	Elite Nursery biofortified (LIEN-B)
9	Drought Tolerance Nursery (CIDTN)	9	Elite Nursery red cot. (LIEN-R)
10	Leaf Miner Nursery (CILMN)	10	Elite Nursery large seed (LIEN-LS)
11	F ₄ Nursery, (CIF ₄ N)	11	Elite Nursery small seed (LIEN-SS)
12	ME Nursery (MECI)	12	Elite Nursery South Asia (LIEN-SA)



Variétés inscrites





Merci

*"Eat pulses for good health,
Grow pulses for soil health."*